



3950 CLAY STREET, SAN FRANCISCO

REMODELED PRESIDIO HEIGHTS EDWARDIAN  
WITH STUNNING DETAIL



Located in Presidio Heights, one of San Francisco's most prestigious neighborhoods, this stunning home is bestowed with the refined grace and character that comes only through the passage of time. Today, the home has been extensively remodeled with complete respect for its early 20<sup>th</sup> century heritage and an eye toward maintaining architectural integrity. Introducing the classic Edwardian style is a crisp palette of taupe and soft white that conveys instant character and vintage appeal. An arched portico with marble clad walls and a series of fluted columns gives way to the foyer and reception parlor where rich expanses of original woodwork, leaded and beveled glass, and oak flooring typify the home's finely crafted Old World details. Adding consummate modern comfort and luxury to the sophisticated ambiance are carefully selected light fixtures, artfully concealed skylights, and the lavish use of designer stones and mosaic patterns that combine in works of art.

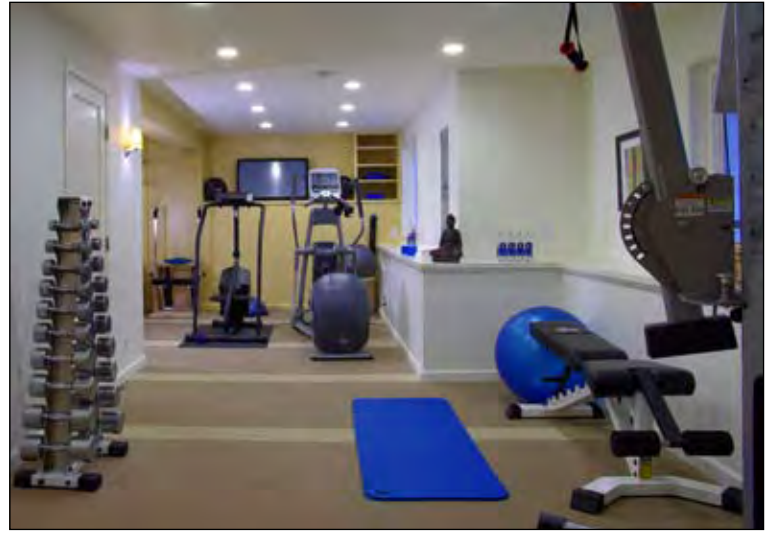
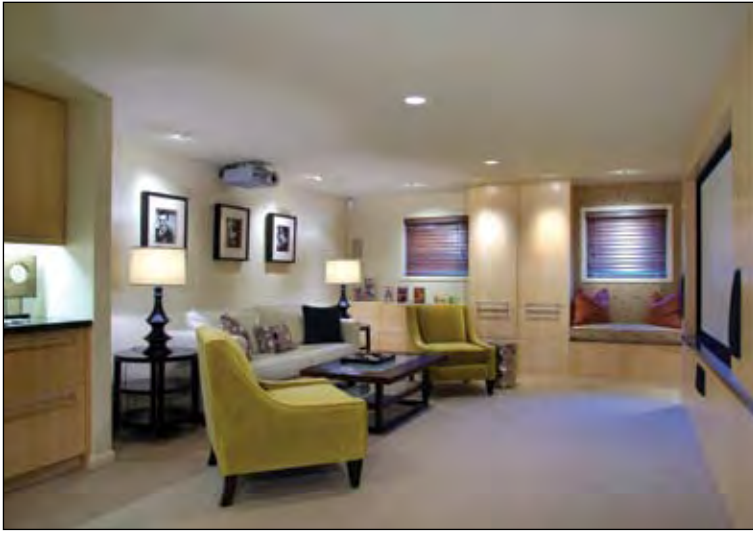






Congenial gathering points abound throughout the three levels ranging from the gracious formality of the living room to the professionally equipped kitchen that stands ready for creating gourmet meals while enjoying the company of friends in the adjacent and inviting family room. Downstairs, movie nights at home come to life in the theatre where a projection system and surround sound capabilities create the true cinema experience. For more quiet times, an upstairs library and fully customized office provide the perfect spot for studying, reading, or work-at-home.

Providing generous personal havens for everyone, the home's four bedrooms are traditionally arranged with three bedrooms on the upper level, highlighted by the master retreat with customized walk-in closet, second closet, and a resort-worthy granite and marble bathroom with steam shower-for-two. An additional bedroom suite on the lower level is perfect for guests or an au pair. Adding luxurious finishing touches for the ultimate in comfort and well-being are a large fitness center, temperature-controlled wine cellar, plus behind-the-scenes wiring for full Internet connectivity. Satisfying the California ideal of outdoor living, a welcoming rear deck and garden with built-in barbecue center provide the perfect setting for al fresco entertaining surrounded by fragrant and colorful perimeter gardens. Augmenting it all is the property's minutes-away proximity to the tranquil green belts of The Presidio, Julius Kahn Playground, upscale shopping and dining, plus effortless access to highways that put the greater Bay Area within easy reach.



————— AT A GLANCE —————

- Three levels with 4 bedrooms and 3.5 bathrooms
- Approximately 5,150 square feet of living space (per appraiser)
- Beautifully renovated throughout with interior design by Marks & Marks Design
- Classic Edwardian-style foyer with tall wainscot paneling
- Refined living room with fireplace flanked by built-in display shelves
- Elegantly appointed formal dining room
- Stunning gourmet kitchen with adjoining butler's pantry and casual dining area
- Inviting family room with fireplace and direct garden access just off the kitchen
- Master bedroom suite with luxurious spa-inspired bathroom
- Two additional bedrooms each with built-in study center plus a designer-finished hall bath
- Upper-level library or second family room with media area
- Fully customized office with tranquil garden outlook
- Lower level with home theatre and refreshment bar, fitness center, wine cellar, laundry room, and bedroom suite ideal for guests or staff
- One-car garage
- Private rear deck and garden with built-in barbecue center, lawn, and perimeter foliage

\$4,500,000



For additional photos please visit:

**[www.3950ClayStreet.com](http://www.3950ClayStreet.com)**

Exclusive listing agent

**Steven M. Gothelf**

415.345.3063 OFFICE

415.602.3515 CELL

[sgothelf@pacunion.com](mailto:sgothelf@pacunion.com)

[stevegothelf.com](http://stevegothelf.com)

DRE# 00709006



The information contained herein, including square footage or acreage, has been provided, by various sources which may include the seller, public records, MLS or others. Pacific Union has not verified or investigated the accuracy of this information. Prospective buyers are advised to conduct their own investigation of the property and the information contained herein, utilizing licensed professionals where appropriate, before purchasing this property.

Photography by Vince Valdes. ©Marketing Designs, Inc. 650.802.0888 • [marketingdesigns.net](http://marketingdesigns.net)