



690 CHESTNUT STREET #208, SAN FRANCISCO
STYLISHLY REMODELED NORTH BEACH CONDOMINIUM





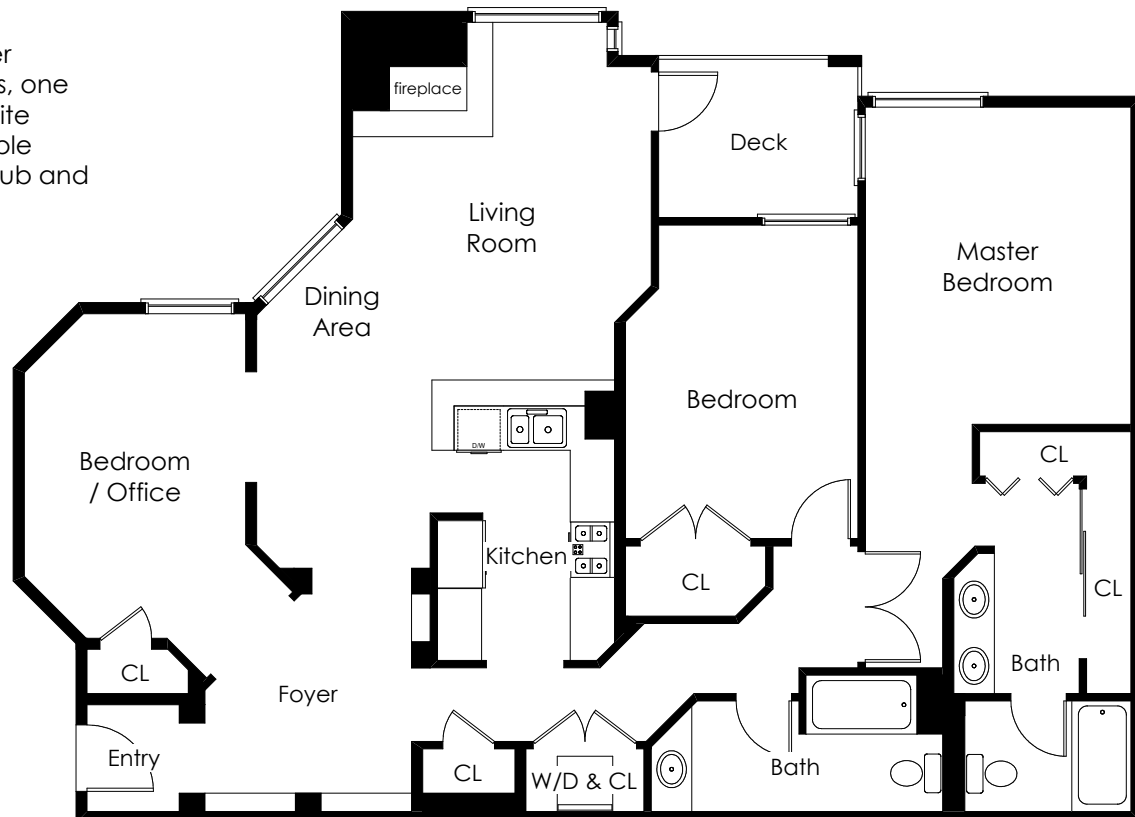
With a prime North Beach location, this spacious remodeled condominium is perfect for City living. Positioned on the second floor with fresh air hallways, the residence is stylishly appointed with an open concept floor plan and 3 bedrooms, one currently used as an office. For outdoor enjoyment, a private patio overlooks the palm tree courtyard, while a shared rooftop terrace offers spacious entertaining space with sweeping views across the Bay and City. A secure lobby, garage parking, plus storage space add the finishing touch for convenient City living.





Summary of the Home

- Prime North Beach location with a vibrant night life, myriad restaurants, and just short blocks to parks and the waterfront
- 3 bedrooms and 2 full bathrooms
- Secure lobby entrance with elevator to the second-floor location
- Maple floors are introduced in the foyer and continue into the main living area
- Bright and light living/dining area has expansive windows with palm tree views and a two-sided fireplace outlined in slate tile; a French door opens to a private patio
- Remodeled chef's kitchen with high-gloss white cabinetry topped in granite slab and honeycomb mosaic tile backsplashes
- Stainless steel appliances include a GE gas range with overhead microwave, Bosch dishwasher, and Kenmore refrigerator
- 3rd bedroom (office), just off the foyer, has custom-colored walls, a center light, and closet
- Master bedroom suite has corner windows and customized closets, one with mirrored sliding doors; en suite bath with dual-sink Carrara marble vanity and separate room with tub and overhead shower
- Second bedroom has access to a tiled bathroom with tub with overhead shower
- Large storage closet with Kenmore stacked washer and dryer
- Underground deeded parking for one car plus storage area
- Shared rooftop terrace with barbecue and magnificent views to the Bay and Alcatraz, Coit Tower, and Russian Hill
- Homeowners' Association dues of \$667.56/month



Offered at \$1,195,000

For additional photos please visit:
www.690chestnut208.com

The information contained herein, including square footage or acreage, has been provided, by various sources which may include the seller, public records, MLS or others. Pacific Union has not verified or investigated the accuracy of this information. Prospective buyers are advised to conduct their own investigation of the property and the information contained herein, utilizing licensed professionals where appropriate, before purchasing this property. Photography by Vince Valdes @Marketing Designs, Inc. 650.802.0888 • marketingdesigns.net