

# *Details of the Fine Residence*

3501 JACKSON STREET, SAN FRANCISCO

## DETAILS OF THE HOME – FIRST FLOOR

### **FOYER**

Two layers of secured iron and glass doors with intercom access open from the street level; the foyer has limestone floors and a sweeping main staircase that ascends all the way to the third floor

### **BEDROOM SUITE 1**

Private, entry-level location and ideal for guests or staff; kitchen area with sink, microwave, and smooth-surface cooktop, plus a walk-in closet and en suite bath in tumbled stone with shower

### **WINE CELLAR**

A French door opens to a magnificent temperature-controlled wine cellar with custom racking for 6,300 bottles and case storage for 500 bottles

## DETAILS OF THE HOME – SECOND FLOOR

### **LIVING ROOM**

Double-door entry from the second-floor foyer; hardwood floors, picture frame and crown moldings, and wood-burning fireplace with carved stone mantelpiece; five sets of French doors, all with cremone hardware, three that open to the terrace and garden

### **LIBRARY & HALF-BATH**

Handsomely appointed with hardwood floors, silk wall coverings, and library shelves on three walls; a closet is designed for file storage and an adjoining half-bath serves the public rooms

### **DINING AREA**

Open design off the kitchen with French doors to the terrace and garden; optionally, the family room could serve as a grand formal dining room; an adjoining butler's pantry includes a wall of glass-front cabinetry with limestone counter, refrigerator, dishwasher, and sink

### **KITCHEN**

Masterfully appointed with glass-front white cabinetry and contrasting center island, all topped in Calacatta marble slab with full-height backsplashes; separate casual dining or sitting room with solarium glass ceiling and French doors to a courtyard with secondary street entrance; large walk-in pantry and separate mudroom with direct access to the garage

### **APPLIANCES**

Viking gas range with 6 burners, grill, griddle, and 2 full ovens; 2 Bosch dishwashers; GE compactor; Viking microwave; Sub-Zero refrigerator; Viking wine refrigerator for 100 bottles

### **FAMILY ROOM**

Extensive wall and ceiling moldings with dramatic vaulted ceiling and all-glass cupola showcasing a magnificent circular chandelier; three sets of French doors open to the terraces and garden

### **THEATRE**

Upholstered walls with sconce lighting and tiered seating for 8; 110-inch cinema screen, high-definition projection system, and THX surround sound

## DETAILS OF THE HOME – THIRD FLOOR

### MASTER BEDROOM SUITE

Off the main staircase and comprising the third floor; the bedroom has a large sitting area with wrap-around windows finished with plantation shutters; French doors open to a spacious limestone terrace; two adjoining walk-in closets are fully customized; bathroom 1 (“hers”) is finished in limestone with a whirlpool tub, shower, vanity, and private commode room; bathroom 2 (“his”) is integrated into a mahogany paneled dressing room with an enclosed wardrobe space, marble fireplace (not operable), limestone vanity, rainspout shower, and private commode room

### BEDROOMS 3 & 4

Accessed via a private staircase by the theatre; one bedroom, currently customized for an office with significant built-ins and partner’s desk, has French doors to a limestone terrace that connects to the master suite; a second bedroom has two closets and two French doors for added light

### BATHROOM

Serving the two bedrooms is a full bath in Carrara marble and colorful tiles with console sink and frameless glass-enclosed shower

## DETAILS OF THE HOME – FOURTH FLOOR

### BEDROOM 5 & BATH

A concealed staircase from the third-floor foyer leads into this carpeted bedroom with vaulted ceiling, built-in bunk beds, and walk-in closet; an adjoining tiled bathroom has a pedestal sink and frameless glass-enclosed shower

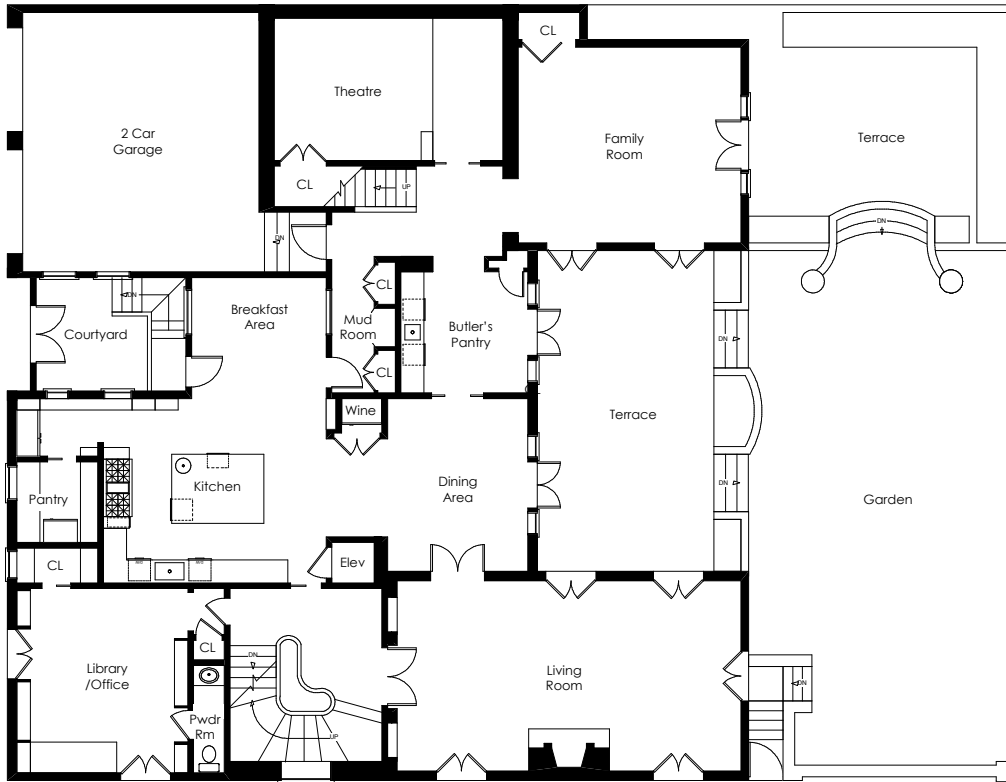
### EXERCISE ROOM (OR BEDROOM 6)

Three entire walls of windows present north and west views with the spires of the Golden Gate Bridge in the distance; the fourth wall is fully mirrored; serpentine track lights encircle the ceiling, which also has a suspended television screen and sound speakers

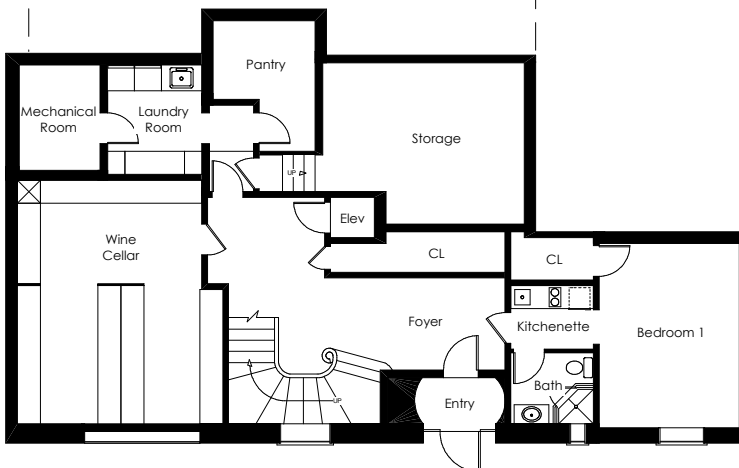
## OTHER FEATURES

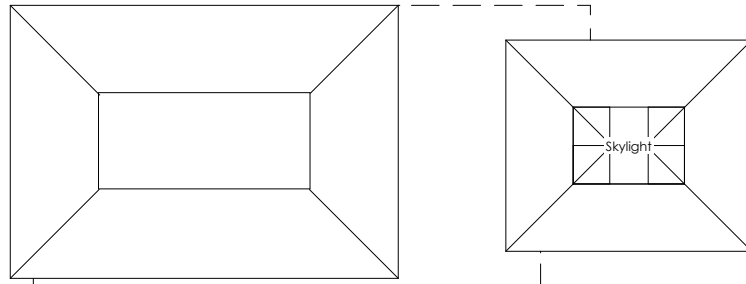
- Elevator servicing all four floors
- First-floor laundry room with sink, adjacent walk-in pantry, and separate storage room
- Retractable shades in family room
- Fully resurfaced exterior included in the renovation
- Crestron sound system
- Lutron programmable lighting
- Security alarm
- Radiant-heated floors with tankless boiler
- Attached, oversized 2-car garage with commercial ice machine
- Spacious and private outdoor venues with two limestone terraces connected by formal gardens with a fountain; an upper-level limestone terrace connects the bedroom wings

## SECOND FLOOR

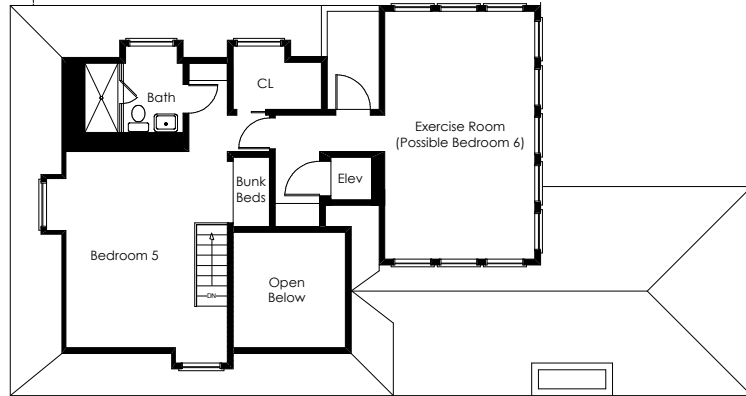


## FIRST FLOOR





**FOURTH FLOOR**



**THIRD FLOOR**

