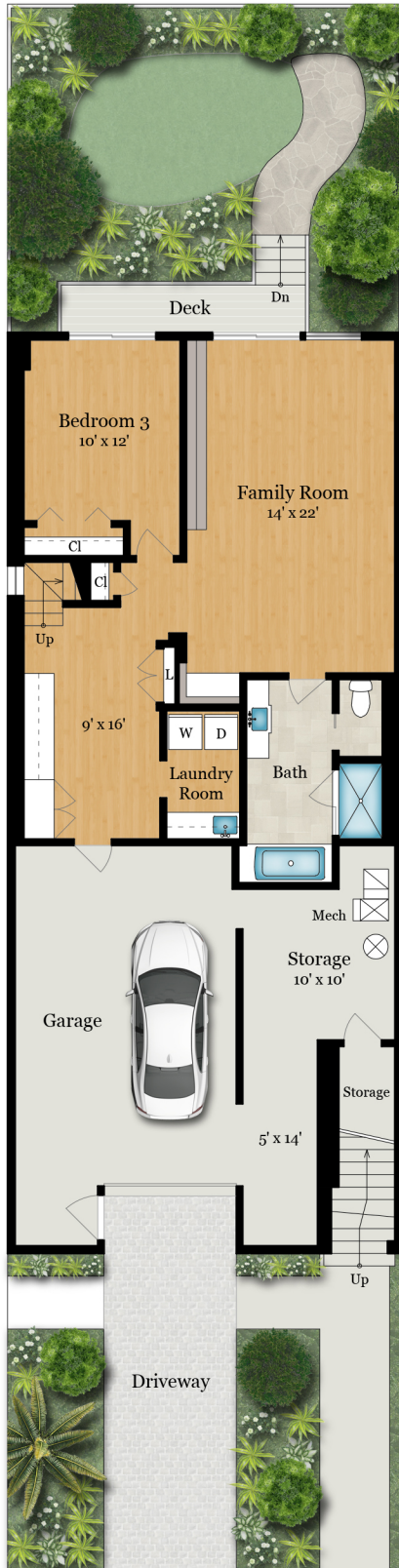


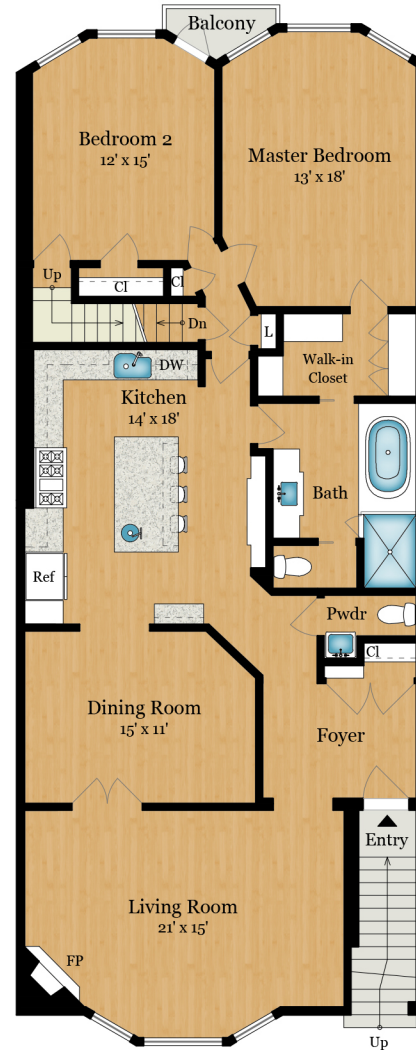
# 265 CLAREMONT BOULEVARD

SAN FRANCISCO, CA 94127



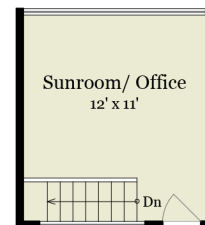
**LOWER LEVEL**  
920 SQ FT

Claremont  
Blvd



**MAIN LEVEL**  
1,640 SQ FT

**UPPER LEVEL**  
180 SQ FT



**Estimated Total Finished  
Square Footage: 2,740 SQ FT**

Above-Grade: 2,740 SQ FT Below-Grade: N/A  
Plus 660 SQ FT Garage/Storage on Lower Level  
Calculated per ANSI Standard Z765-2003.

\* Estimated Total Finished & Unfinished Square Footage: 3,400 SQ FT



**PACIFIC  
UNION**  
INTERNATIONAL

Rendering by Floor Plan Visuals.  
All measurements are approximate. While deemed reliable, no information  
on these floor plans should be relied upon without independent verification.

Presented by Steven Gotherf & Teresa Callan, Pacific Union  
Tel: 415.602.3515 & 415.999.1302  
Email: sgothelf@pacunion.com & tcallan@pacunion.com