



2332 VALLEJO STREET

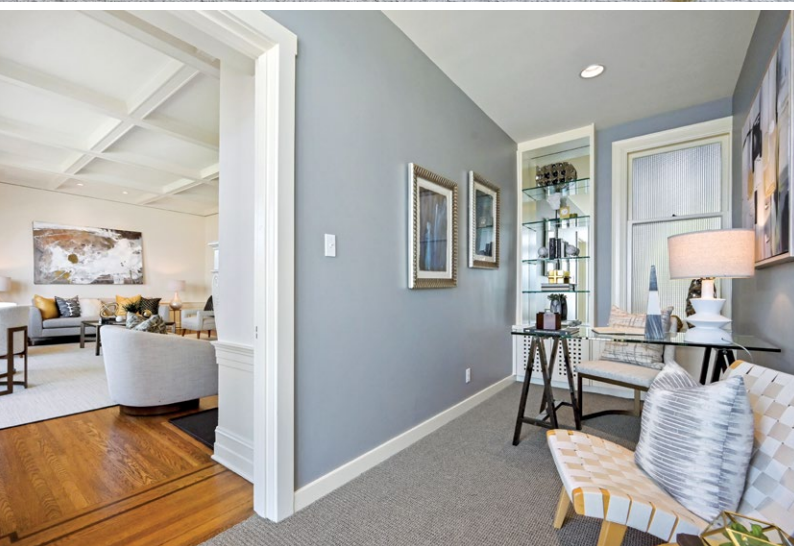
Pacific Heights | San Francisco

Presented by Steve Gothelf

PACIFIC HEIGHTS FULL-FLOOR CONDO
WITH GOLDEN GATE BRIDGE VIEWS



Centrally located on a prime block in Pacific Heights, this full-floor remodeled condominium features sweeping Bay views from the Golden Gate Bridge to Alcatraz. Spanning the middle of a 3-unit building, the home's elevated front entrance showcases circa 1902 details and elaborately carved of-the-era moldings. Fine hardwood floors, new carpet, and freshly painted interiors enhance the remodeling, which includes a modern kitchen and two well-appointed bathrooms. The views take center stage from the spacious living and dining room combination as well as the adjoining office, which opens to a private patio for fresh-air enjoyment. There are two bedrooms, including the primary suite privately located at the front of the home with en suite Carrara marble bathroom. Adding convenience is concealed laundry in the kitchen plus garage parking for one car in the side-by-side attached garage. Earning a Walk Score of 92, this home is just blocks to restaurants and cafes on Union and Fillmore Streets, 3 blocks to Alta Plaza Park, and 6 blocks to The Presidio a 1,500-acre national park. The best of City living awaits!





SUMMARY OF THE HOME

- Remodeled full-floor middle condominium in a 3-unit building
- Exceptional views out to the Golden Gate Bridge, Palace of Fine Arts, and across the Bay to Alcatraz
- 2 bedrooms, office, and 2 baths, including primary suite
- Approximately 1,640 square feet (per Floor Plan Visuals)
- Elevated front entrance with classic architectural moldings with dentil and carved corbel detail
- Freshly painted interiors, hardwood floors, and new carpet in the bedrooms and office
- Foyer and wide hallway lined from end to end with a bank of cabinetry
- Spacious living and dining room combination with bowed wall of windows presenting iconic Bay views
- Gas fireplace with traditional mantelpiece, mirrored wall panels, and counter seating beneath a wide pass-through to the kitchen
- Sleek modern kitchen has white cabinetry topped in granite slab with stainless steel or mirrored full-height backsplashes
- Stainless steel appliances include a Thermador gas cooktop, GE Monogram microwave/convection oven plus second oven, Bosch dishwasher, and Monogram refrigerator
- Office, just off the living room, with Bay views and opposite wall with mirror above cabinetry to reflect the views; a French door opens to a private view patio

- Primary bedroom suite has two arched front windows, recessed lighting, and organized walk-in closet; remodeled en suite bath, in Carrara marble and contrasting black marble, with large frameless-glass shower
- Second bedroom with pocket doors and two windows
- Bath with mosaic tile floor, pedestal sink, and tiled shower with wall of concave glass block and frameless-glass door
- Stacked washer/dryer concealed in the kitchen
- Side-by-side 1-car parking in the attached 2-car garage
- Prime Pacific Heights, Walk Score of 92, blocks to Union and Fillmore Streets restaurants and cafes, 3 blocks to Alta Plaza Park with tennis courts, and 6 blocks to the Presidio, a 1,500-acre national park site with golf course

Offered at \$2,395,000

For additional photos, please visit:

2332Vallejo.com



Steven M. Gothelf

415.602.3515

License# 00709006

steve@stevegothelf.com

stevegothelf.com

Sotheby's
INTERNATIONAL REALTY