

# PACIFIC HEIGHTS PENTHOUSE WITH STUNNING VIEWS



2100 GREEN STREET, #800

Pacific Heights | San Francisco  
Presented by Adam Gothelf





Take in all the iconic San Francisco views from this luxury penthouse with private rooftop terrace, just one block to Union Street in sought-after Pacific Heights. This cooperative residence offers the best of City living – the architectural appeal of a classic 1920's corner building, updated interiors that are stylishly appointed, and expansive Bay, Golden Gate Bridge, and City views. Located on the highest floor of this heritage building, and with the only rooftop deck, the exceptional floor plan is open and spacious with light-filled public rooms catered by a granite-finished chef's kitchen. Venues for relaxation are many – a richly paneled library, inviting family room, glass solarium, and even an outdoor sauna. The home's private quarters comprise two luxurious bedroom suites, each with panoramic views and marble-appointed bath. This residence also enjoys an on-site building manager, garage parking for one car, and private storage. This highly coveted location is a short walk to the shops, cafes, and restaurants of Union Street and convenient to Chestnut and Fillmore Streets, both highly popular bustling commercial corridors.





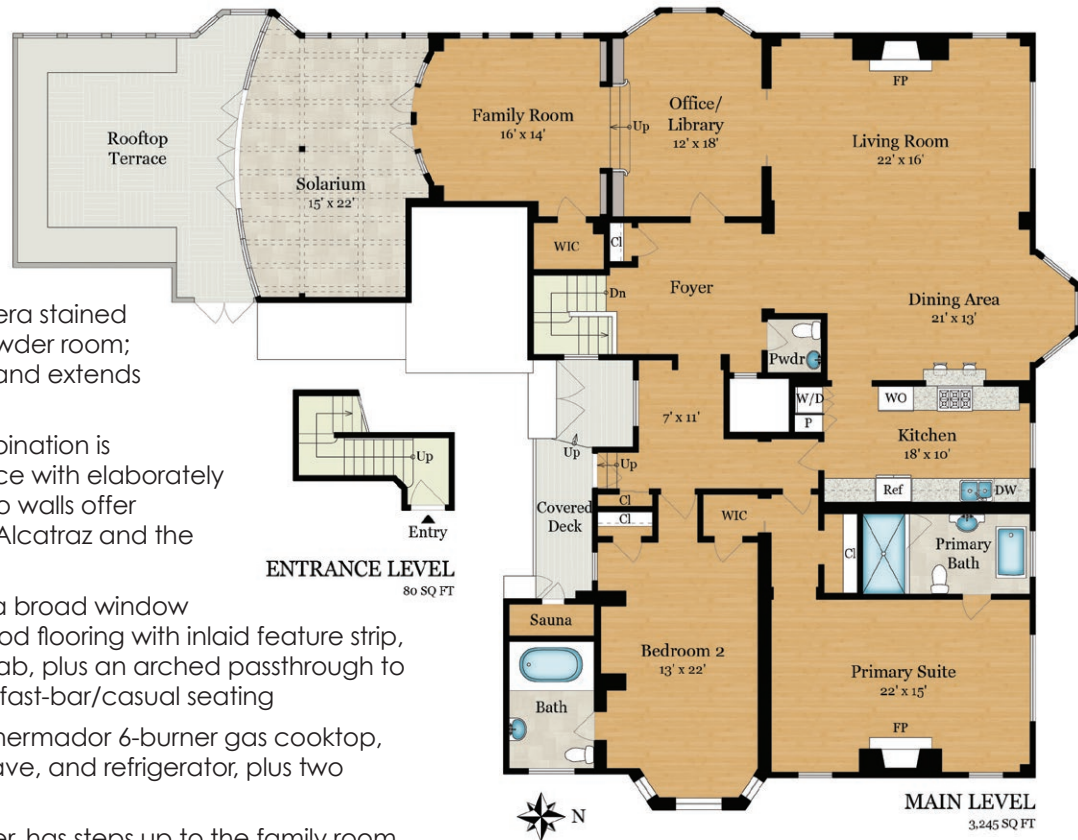






## DETAILS OF THE HOME

- Penthouse cooperative with 2 bedrooms, 2.5 bathrooms, library, family room, solarium, and approximately 3,122 square feet (per tax records)
- An arched front door opens to a staircase with ornate floral-designed iron handrail leading up to the generous foyer with of-the-era stained glass windows, track lighting, and powder room; parquet wood flooring is introduced and extends throughout the main living areas
- The spacious living/dining room combination is anchored by a wood-burning fireplace with elaborately carved mantelpiece; windows on two walls offer stunning views of San Francisco Bay, Alcatraz and the Golden Gate Bridge
- The gourmet kitchen, illuminated by a broad window overlooking the Bay, has fine hardwood flooring with inlaid feature strip, quality cabinetry topped in granite slab, plus an arched passthrough to the dining area with additional breakfast-bar/casual seating
- Stainless steel appliances include a Thermador 6-burner gas cooktop, two ovens, warming drawer, microwave, and refrigerator, plus two Fisher & Paykel dishwasher drawers
- Richly paneled library, just off the foyer, has steps up to the family room, each with western-facing windows; the family room has terra cotta tile flooring, a closet fitted for wine storage, and wall of leaded glass windows and doors to the solarium
- All-glass solarium features travertine flooring in a Versailles pattern and four French doors to the south-facing private rooftop deck, which boasts panoramic views of the City, Bay, and Golden Gate Bridge
- The master suite has sweeping views, two wardrobe closets, plus a wood-burning fireplace with period mantelpiece; en suite marble bath has heated floors, a freestanding tub, steam shower with multiple shower heads and body sprays, and a broad window out to the Bay
- Second bedroom suite with scalloped doorway flanked by matching closets; the en suite bath, in a classic black and white motif, has marble tile floor and wainscot and a whirlpool tub with hand-held spray



- Other features include: concealed laundry area in the kitchen; outdoor sauna off a deck; sound speakers in some rooms; security system; garage parking for one car; private storage area
- Monthly maintenance fee of \$1,682.74 includes on-site manager, building insurance, cable, refuse collection, common area maintenance, window washing, plus common heat and water
- All sales are subject to approval by the Board of Directors of the Cooperative Homeowner's Association

Offered at **\$5,495,000** For additional photos please visit: [www.2100GreenPenthouse.com](http://www.2100GreenPenthouse.com)



**Adam Gothelf**

415.509.5336

License# 01888146

gothelfre@gmail.com

AdamGothelf.com

**Sotheby's**  
INTERNATIONAL REALTY